



DYCO

SILICONE ACRYLIC

Opaque Concrete Waterproofing Sealer



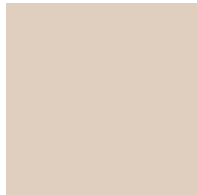
65-00
Bombay



DYCO SKID GARD
NOTE: Shown in Bombay



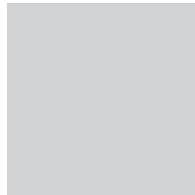
66-60
Desert Tan



66-20
Dove Gray



65-20
Bison



68-30
Cement



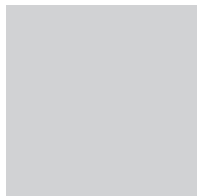
65-30
Terra Cotta



65-40
Brick Red



68-20
Autumn Brown



65-50
Gull Gray



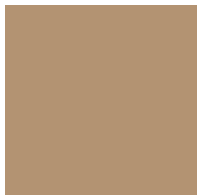
65-60
Pearl Gray



65-70
Silver Gray



66-30
Charcoal Gray



65-10
Sandstone



65-90
Patio Green

Also available in: #66-50 Tile Red, #65-80 Summer Green,
#66-00 White, #66-10 Black and #66-40 Clear.

DYCO SILICONE ACRYLIC

Opaque Concrete Waterproofing Sealer

Acrylic Silicone is a finish with superior film properties formulated to provide a low sheen hard protective finish on unpainted concrete or other porous masonry surfaces.

Acrylic Silicone resists fading, cracking, peeling, and mildew. It is ideal for its intended uses and is easy to apply.

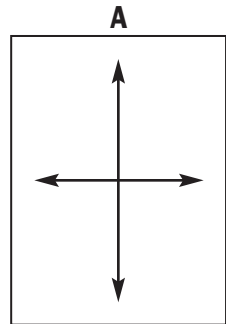
Surfaces: Patios, walks, swimming pool deck, driveways, stucco, block, tennis, and shuffleboard courts.

Surface Preparation: Apply only on **unpainted, untreated** concrete that has cured for at least 30 days outside and 60 days in enclosed areas. Surface must be clean, dry, and free of paint, grease, dirt, and mildew. Non-porous concrete requires etching. Etch with one part muriatic acid and three parts water. Apply solution and rinse thoroughly after ten minutes. Concrete must be dry completely (at least 24-hours) before staining. Not recommended for extremely non-porous glazed or polished masonry.

Application: Follow procedures on the Product Label.

Tools Needed: Solvent-resistant roller cover with 3/8" nap, 6' wooden pole and cage, 3" to 4" paint brush. DO NOT use Nylon Brushes with Xylene products.

COVERAGE CALCULATOR



Multiply

$A \times B = \text{Sq. Ft.}$

Divide

$175 \text{ Sq. Ft.} / \text{Sq. Ft.} =$
Approximate # of gallons
needed to coat surface with
two coats.

Example

$20' \times 60' = 1200 \text{ Sq. Ft.}$
 $175 / 1200 = 6.85$

Approx. 7 gallons needed for both coats.



5850 Ulmerton Rd. Clearwater, FL 33760
Tel: 727-536-6560 • Fax 727-536-0561
Toll: 800-282-7901

www.dycopaints.com

Distributed By:



6500 Series
Dyco Silicone Acrylic
Opaque Concrete
Waterproof Sealer

COLORS

6500 Bombay	6510 Sandstone	6520 Bison	6530 Terra Cotta
6540 Brick Red	6550 Gull Gray	6560 Pearl Gray	6570 Silver Gray
6580 Summer Green	6590 Patio Green	6600 White	6610 Black
6620 Dove Grey	6630 Charcoal Grey	6640 Clear	6650 Tile Red
6660 Desert Tan	6820 Autumn Brown	6830 Cement	

PRODUCT DESCRIPTION

DYCO Silicone Acrylic is a durable finish with superior film properties formulated to provide a low sheen, hard protective finish on unpainted concrete or other porous masonry surfaces.

RECOMMENDED USES

Patios, walks, driveways, stucco, block, tennis, and shuffleboard courts.

PRODUCT ADVANTAGES

Opaque Sealer resists fading, cracking, peeling, and mildew. It is ideal for its intended uses and is easy to apply.

LIMITATIONS

Precautions: Take these precautions before the coating dries and during application.
WARNING! Harmful or fatal if swallowed. Flammable. Vapor harmful. Contains petroleum distillates. If swallowed, do not induce vomiting. CALL PHYSICIAN IMMEDIATELY. Keep away from heat and open flame. Avoid prolonged contact with skin and breathing of vapor or spray mist. Close container after each use. Do not take internally. USE WITH ADEQUATE VENTILATION. KEEP OUT OF REACH OF CHILDREN. If confined areas, use adequate forced ventilation during application and drying. Use fresh air masks, clean clothing, and explosion-proof equipment. Prohibit flames, sparks, welding, and smoking.

SURFACE PREPARATION

Apply only on unpainted, untreated concrete that has cured for at least 30 days outside and 60 days in enclosed well-ventilated areas. The surface must be clean, dry, and free of paint, grease, dirt, and mildew. Non-porous concrete requires etching. Etch with one part muriatic acid and three parts water. Apply acid solution and rinse thoroughly after 20 minutes. Concrete must dry completely (at least 24 hours) before staining. Not recommended for extremely non-porous glazed or polished masonry.

APPLICATION

Stir DYCO Silicone Acrylic from bottom with vigorous strokes. Do not add oil or other paints. Apply DYCO Silicone Acrylic by brush, roller spray. A1/4" to a 3/8" phenolic core roller cover is recommended. Do not leave puddles. Two coats are recommended. Thin the first coat with DYCO ES-110 Reducer, using 1 pint ES-110 Reducer to 1 gallon of sealer. Allow first coat to dry at least 4 hours before applying finish coat. DYCO Silicone Acrylic dries exceptionally fast under average atmospheric conditions. Keep all foot traffic off for at least two (2) hours. Keep automobiles off a minimum of 72 hours or more.

CAUTION: Damp, soiled or inclined surfaces may result in a degree of slipperiness. User should determine if a non-skid additive is necessary. Contact dealer.

TECHNICAL DATA

Product Number - #65 & #66 Series

Generic Type - Acrylic Modified Silicone

Color - White

Sheen - Low Luster

% Solids by Weight - 47.68%

% Solids by Volume - 30.54%

Recommended Coverage:

5.6 mils wet

1.4 mils dry

Avg. 175-200 sq. ft. per gallon on porous surfaces

% Vehicle Solids by Weight - 19.49

% Pigment by Weight - 28.18%

% Solvent by Weight - 52.32%

Viscosity Stormer - 53-54 KU

Weight/Gallon - 9.60

Flash Point - 81E F.

Dry Time - 70E F., 50% R. H.

Touch - 1 hour

(depending on weather)

Recoat - 2 hours

Max VOC - 600 grams/liter

Reduction Solvent - ES-110

Clean Up Solvent - Xylene

CAUTION: Do Not Apply this product to a Bomanite Surface.

LIMITATION OF LIABILITY

Technical data is true and accurate at date of issuance, but subject to change without notice. Our products conform to quality standards, but no other warranty or guarantee is expressed or implied. Liability, if any, is limited to replacement of product or purchase price. Labor, cost of labor or other consequential damages is hereby excluded.

